

HYUPSHIN FLANGES



Flanges

Flansche

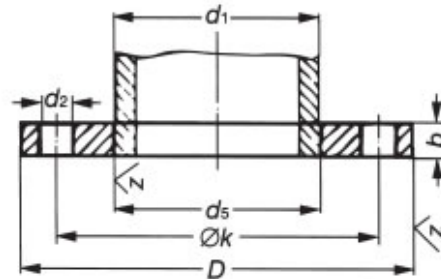
Brides

Plane Welding Flanges

DIN 2576



Material:
1.4541 / 1.4571



DIN 2576 PN 10

DN	Tube		d ₅	Flange				Drilling			Weight in kg ≈
	line 1	d ₁ line 2		D	b	e	k	Number	Thread	d ₂	
10	-	14,0	14,5	90	14	5	60	4	M 12	14	0,613
10	17,2	-	17,7	90	14	5	60	4	M 12	14	0,605
15	-	20,0	21,0	95	14	5	65	4	M 12	14	0,675
15	21,3	-	22,0	95	14	5	65	4	M 12	14	0,669
20	-	25,0	26,0	105	16	5	75	4	M 12	14	0,749
20	26,9	-	27,6	105	16	5	75	4	M 12	14	0,936
25	-	30,0	31,0	115	16	5	85	4	M 12	14	1,400
25	33,7	-	34,4	115	16	5	85	4	M 12	14	1,110
32	-	38,0	39,0	140	16	5	100	4	M 16	18	1,660
32	42,4	-	43,1	140	16	5	100	4	M 16	18	1,620
40	-	44,5	45,5	150	16	5	110	4	M 16	18	1,890
40	48,3	-	49,0	150	16	5	110	4	M 16	18	1,860
50	-	57,0	58,1	165	18	6	125	4	M 16	18	2,510
50	60,3	-	61,1	165	18	6	125	4	M 16	18	2,700
65	76,1	-	77,1	185	18	6	145	4	M 16	18	3,000
80	88,9	-	90,3	200	20	7	160	8	M 16	18	3,790
100	-	108,0	109,6	220	20	7	180	8	M 16	18	4,200
100	114,3	-	115,9	220	22	7	180	8	M 16	18	4,030
125	-	133,0	134,8	250	22	7	210	8	M 16	18	5,710
125	139,7	-	141,6	250	22	7	210	8	M 16	18	5,460
150	-	159,0	161,1	285	22	7	240	8	M 20	22	6,720
150	168,3	-	170,5	285	22	7	240	8	M 20	22	6,570
(175)	193,7	-	196,1	315	24	7	270	8	M 20	22	8,450
200	219,1	-	221,8	340	24	7	295	8	M 20	22	9,310
250	-	267,0	270,2	395	26	7	350	12	M 20	22	12,500
250	273,0	-	276,2	395	26	7	350	12	M 20	22	11,900
300	323,9	-	327,6	445	26	7	400	12	M 20	22	13,800
350	355,6	-	359,7	505	28	7	460	16	M 20	22	20,600
350	-	368,0	372,2	505	28	7	460	16	M 20	22	19,000
400	406,4	-	411,0	565	32	7	515	16	M 24	26	27,900
400	-	419,0	423,7	565	32	7	515	16	M 24	26	25,900
(450)	457,0	-	462,3	615	38	7	565	20	M 24	26	35,600
500	508,0	-	513,6	670	38	7	620	20	M 24	26	41,100

If possible, don't use parenthesized sizes.

Sizes of row 1 are international, those of row 2 occasionally are used in Germany.

All items and specifications are subject to revision.

All sizes in mm

We Supply following steel flanges in norms:

In DIN-Standard:

Blind Flanges: DIN 2527 PN 6 / PN 10 / PN 16 / PN 25 / PN 40 / PN 64 / PN 100

Welding Flanges: DIN 2573 PN 6 / DIN 2576 PN 10 / DIN 2501 / DIN 2502 / DIN 2503 / DIN 2543 PN16

Welding Neck Flanges: DIN 2631 PN 6 / DIN 2632 PN 10 / DIN 2633 PN 16 / DIN 2634 PN 25 / DIN 2635 PN 40

Lapped Flanges: DIN 2641 PN 6 / DIN 2642 PN 10

Threaded Flanges: DIN 2565 PN 6 / DIN 2566 PN 16

In UNI-Standard:

Blind Flanges: UNI 6091 PN 6 / UNI 6092 PN 10 / UNI 6093 PN 16 / UNI 6094 PN 25 / UNI 6095 PN 40

Welding Flanges: UNI 2276 PN 6 / UNI 2277 PN 10 / UNI 2278 PN 16 / UNI 6083 / UNI 6084

Welding Neck Flanges: UNI 2280 PN 6 / UNI 2281 PN 10 / UNI 2282 PN 16 / UNI 2283 PN 25 / UNI 2284 PN 40

Lapped Flanges: UNI 6088 PN 6 / UNI 6089 PN 10/ UNI 6090 PN 16

Threaded Flanges: UNI 2253 PN 6 / UNI 2254 PN 16

In EN 1092-1 Standard:

Blind Flanges: Type 05 PN 6 / PN 10 / PN 16 / PN 25 / PN 40

Welding Flanges: Type 01 PN 6 / PN 10 / PN 16 / PN 25 / PN 40

Welding Neck Flanges: Type 11 PN 6 / PN 10 / PN 16 / PN 25 / PN 40

Lapped Flanges: Type 02 PN 6 / PN 10 / PN 16

Threaded Flanges: Type 13 PN 6 / PN 16

Raw Material for Carbon Steel:

European Norms: C22.8, RSt 37-2, S235JRG2, C21, P245GH, P250GH, P265GH

ASTM Norms: A105, A350

We provide all flanges according to your specifications and drawings, we delivery flanges to all ports where you in anywhere.

JINAN HYUPSHIN FLANGES CO., LTD

No6, Nanbei Road, Niupai, Mingshui,
Zhangqiu City, Shandong,
China - 250 200

President : Mr. Guo Zhaoji

Director : Mr. Hong Songjo

Tel : + 86 531 832 945 52

Fax : + 86 531 832 918 78

Marketing Director: Mr. Austin. Guo

Tel : + 86 531 836 354 21

Fax : + 86 531 832 977 28

Email: austin@hyupshin.cn

Skype : iguorui

For Marketing & Products enquiries:

sale@hyupshin.cn

www.forged-flange.com

www.hyupshin.cn